

## **Sgrada 9 - MBT**

Partner for Contact:  
Order No.:  
Company:  
Customer No.:

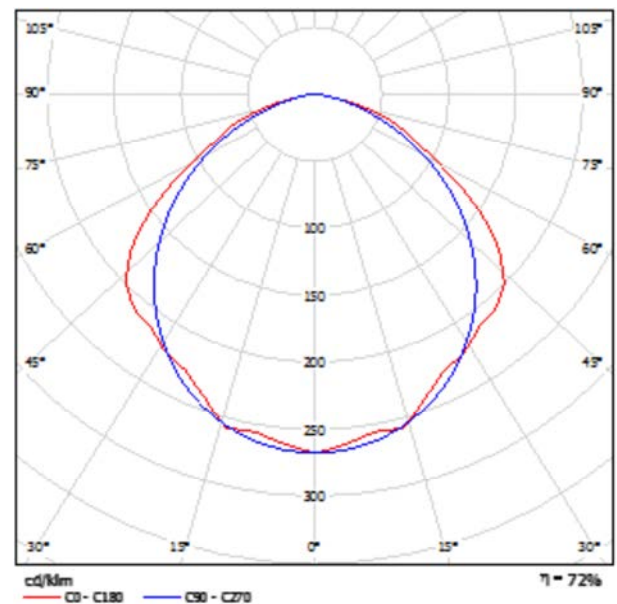
Date: 16.07.2013  
Operator:

Operator  
Telephone  
Fax  
e-Mail

## BEGHELLI SPA 14833 ACCIAIO T5 RE 280W 14833 ACCIAIO T5 RE 280W / Luminaire Data Sheet

Luminous emittance 1:

See our luminaire catalog for an image of the luminaire.



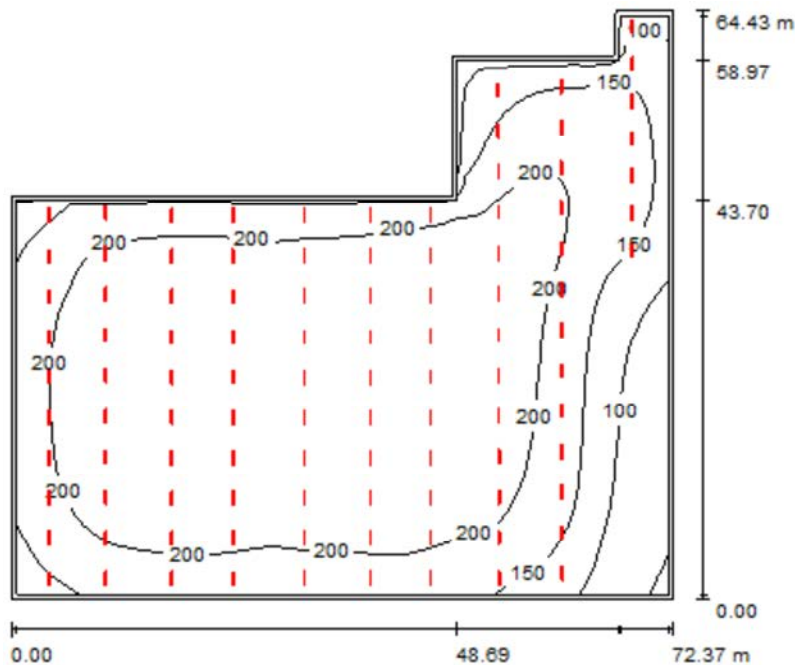
Luminaire classification according to CIE: 100  
CIE flux code: 49 83 98 100 72

Luminous emittance 1:

Glare Evaluation According to UGR												
s Ceiling		70	70	90	90	90	70	70	90	90	90	90
s Wall		90	90	90	90	90	90	90	90	90	90	90
s Floor		90	90	90	90	90	90	90	90	90	90	90
Room Size X Y		Viewing direction at right angles to lamp axis					Viewing direction parallel to lamp axis					
2H	2H	22.0	23.3	22.3	23.5	23.8	20.7	22.0	21.0	22.3	22.5	
	3H	23.3	24.5	23.6	24.8	25.0	22.0	23.2	22.4	23.5	23.7	
	4H	23.8	24.9	24.1	25.1	25.4	22.4	23.5	22.7	23.8	24.1	
	5H	23.9	24.9	24.2	25.2	25.5	22.5	23.6	22.9	23.9	24.2	
	8H	23.9	24.9	24.2	25.2	25.5	22.6	23.6	22.9	23.9	24.2	
4H	2H	23.9	24.8	24.2	25.1	25.4	22.5	23.5	22.9	23.8	24.1	
	3H	23.5	23.6	22.8	23.8	24.1	21.5	22.6	21.8	22.9	23.1	
	4H	24.0	24.9	24.4	25.2	25.6	22.0	24.0	23.4	24.3	24.6	
	5H	24.5	25.4	24.9	25.7	26.1	22.5	24.4	23.9	24.7	25.1	
	8H	24.7	25.4	25.1	25.8	26.2	22.8	24.5	24.2	24.9	25.3	
8H	2H	24.7	25.4	25.2	25.8	26.2	22.8	24.5	24.3	24.9	25.3	
	3H	24.7	25.5	25.2	25.7	26.2	22.8	24.4	24.3	24.8	25.2	
	4H	24.7	25.4	25.1	25.8	26.2	22.8	24.4	24.2	24.8	25.2	
	5H	25.0	25.5	25.4	25.9	26.4	24.1	24.7	24.6	25.1	25.6	
	8H	25.0	25.5	25.5	25.9	26.4	24.2	24.7	24.7	25.1	25.6	
12H	2H	25.0	25.4	25.5	25.9	26.4	24.3	24.6	24.7	25.1	25.6	
	4H	24.7	25.3	25.2	25.7	26.1	23.8	24.4	24.2	24.8	25.2	
	8H	25.0	25.4	25.5	25.9	26.4	24.2	24.6	24.6	25.1	25.6	
Variation of the observer position for the luminaire distance S												
S = 1.0H		+0.2 / -0.1					+0.1 / -0.2					
S = 1.5H		+0.5 / -0.7					+0.4 / -0.6					
S = 2.0H		+1.0 / -1.3					+0.9 / -1.3					
Standard table		BROH					BROH					
Correction Summand		-2.2					-2.9					
Corrected Glare Index referring to 2200lm Total Luminous Flux												

Operator  
Telephone  
Fax  
e-Mail

## Proizvodstvena zala / Summary



Height of Room: 12.000 m, Mounting Height: 11.000 m, Maintenance factor: 0.80

Values in Lux, Scale 1:828

Surface	$\rho$ [%]	$E_{av}$ [lx]	$E_{min}$ [lx]	$E_{max}$ [lx]	$u_0$
Workplane	/	192	46	247	0.238
Floor	20	187	49	246	0.261
Ceiling	70	40	18	55	0.444
Walls (8)	50	88	22	287	/

### Workplane:

Height: 0.750 m  
Grid: 64 x 64 Points  
Boundary Zone: 0.500 m

Illuminance Quotient (according to LG7): Walls / Working Plane: 0.448, Ceiling / Working Plane: 0.206.

### Luminaire Parts List

No.	Pieces	Designation (Correction Factor)	$\Phi$ (Luminaire) [lm]	$\Phi$ (Lamps) [lm]	P [W]
1	103	BEGHELLI SPA 14833 ACCIAIO T5 RE 280W 14833 ACCIAIO T5 RE 280W (1.000)	8855	12300	160.0
Total:			912106	1266900	16480.0

Specific connected load:  $4.58 \text{ W/m}^2 = 2.38 \text{ W/m}^2/100 \text{ lx}$  (Ground area:  $3599.55 \text{ m}^2$ )



Operator  
Telephone  
Fax  
e-Mail

## Proizvodstvena zala / Photometric Results

Total Luminous Flux: 912106 lm  
Total Load: 16480.0 W  
Maintenance factor: 0.80  
Boundary Zone: 0.500 m

Surface	Average illuminances [lx]			Reflection factor [%]	Average luminance [cd/m²]
	direct	indirect	total		
Workplane	159	33	192	/	/
Floor	153	34	187	20	12
Ceiling	0.00	40	40	70	8.84
Wall 1	60	34	94	50	15
Wall 2	36	29	65	50	10
Wall 3	48	33	81	50	13
Wall 4	51	35	87	50	14
Wall 5	45	31	76	50	12
Wall 6	45	30	75	50	12
Wall 7	69	37	106	50	17
Wall 8	64	38	102	50	16

Uniformity on the working plane

u0: 0.238 (1:4)

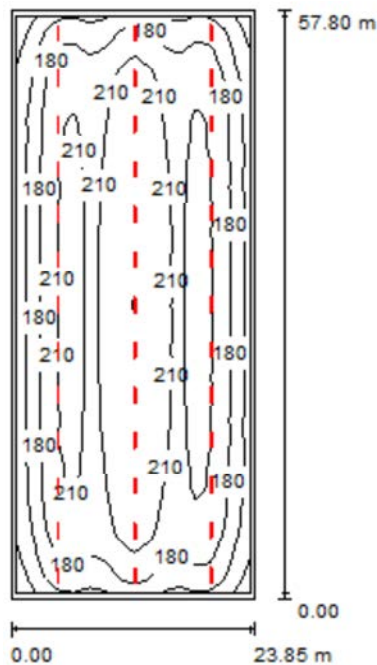
$E_{\min} / E_{\max}$ : 0.184 (1:5)

Illuminance Quotient (according to LG7): Walls / Working Plane: 0.448, Ceiling / Working Plane: 0.206.

Specific connected load:  $4.58 \text{ W/m}^2 = 2.38 \text{ W/m}^2/100 \text{ lx}$  (Ground area:  $3599.55 \text{ m}^2$ )

Operator  
Telephone  
Fax  
e-Mail

## Priemna / Summary



Height of Room: 7.000 m, Mounting Height: 7.000 m, Maintenance factor: 0.80

Values in Lux, Scale 1:743

Surface	$\rho$ [%]	$E_{av}$ [lx]	$E_{min}$ [lx]	$E_{max}$ [lx]	$u_0$
Workplane	/	195	99	242	0.510
Floor	20	186	94	235	0.504
Ceiling	70	40	33	53	0.818
Walls (4)	50	93	34	190	/

### Workplane:

Height: 0.750 m  
Grid: 64 x 128 Points  
Boundary Zone: 0.500 m

Illuminance Quotient (according to LG7): Walls / Working Plane: 0.471, Ceiling / Working Plane: 0.205.

### Luminaire Parts List

No.	Pieces	Designation (Correction Factor)	$\Phi$ (Luminaire) [lm]	$\Phi$ (Lamps) [lm]	P [W]
1	39	BEGHELLI SPA 14833 ACCIAIO T5 RE 280W 14833 ACCIAIO T5 RE 280W (1.000)	8855	12300	160.0
Total:			345361	479700	6240.0

Specific connected load:  $4.53 \text{ W/m}^2 = 2.32 \text{ W/m}^2/100 \text{ lx}$  (Ground area:  $1378.87 \text{ m}^2$ )



Operator  
Telephone  
Fax  
e-Mail

## Priemna / Photometric Results

Total Luminous Flux: 345361 lm  
Total Load: 6240.0 W  
Maintenance factor: 0.80  
Boundary Zone: 0.500 m

Surface	Average illuminances [lx]			Reflection factor [%]	Average luminance [cd/m²]
	direct	indirect	total		
Workplane	162	33	195	/	/
Floor	151	34	186	20	12
Ceiling	0.00	40	40	70	8.90
Wall 1	61	34	95	50	15
Wall 2	60	34	94	50	15
Wall 3	62	34	96	50	15
Wall 4	57	34	90	50	14

Uniformity on the working plane

u0: 0.510 (1:2)

E<sub>min</sub> / E<sub>max</sub>: 0.411 (1:2)

Illuminance Quotient (according to LG7): Walls / Working Plane: 0.471, Ceiling / Working Plane: 0.205.

Specific connected load:  $4.53 \text{ W/m}^2 = 2.32 \text{ W/m}^2/100 \text{ lx}$  (Ground area:  $1378.87 \text{ m}^2$ )